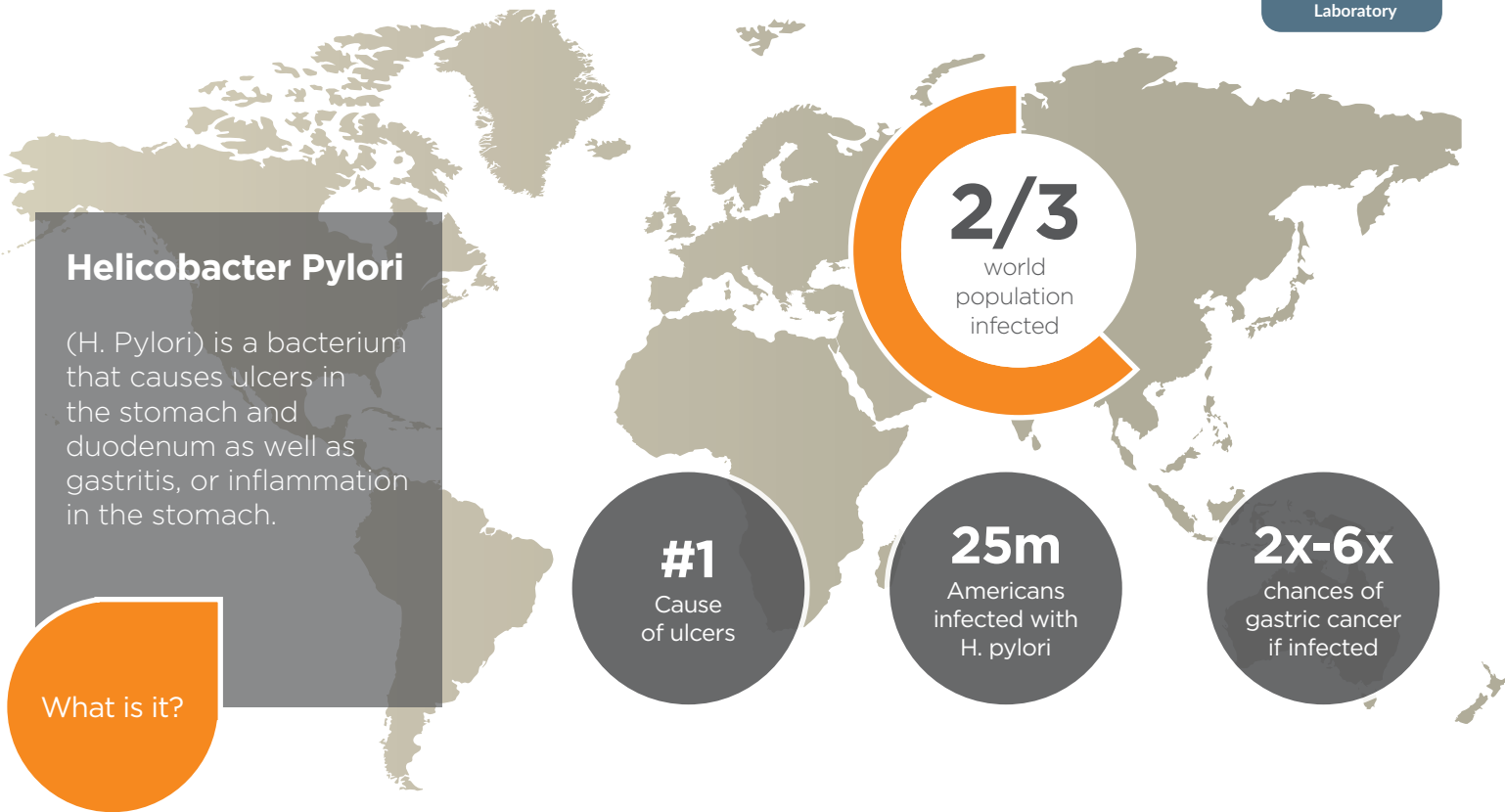


# Helicobacter Pylori (h. pylori)



Symptoms of H. pylori infection	• Belching	• Nausea, Vomiting	• Fatigue
	• Bloating	• Abdominal pain	• Heartburn

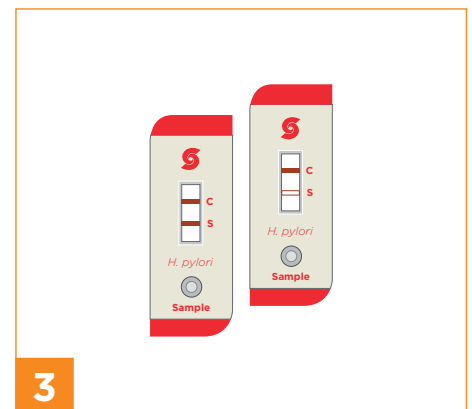
## Testing for H. Pylori is as easy as 1, 2, 3



Collect whole blood, serum or plasma



2 drops of venipuncture or fingerstick whole blood. 1 drop of buffer



10 minutes to result

### ORDER TODAY

Product Ref: 6300-020 (20 tests)  
Call: 1-866-782-6246 (Toll Free)  
stanbioorders@ekfdiagnostics.com  
www.ekfusa.com

**STANBIO**Chemistry



Diagnostics for life