

## Lactate Scout Vet

Accurate lactate measurement  
to drive animal care decisions

- Result in 10 seconds
- Only a single drop of blood required
- Simple to use
- E-paper display for easier viewing
- Ergonomic design, small, light and robust

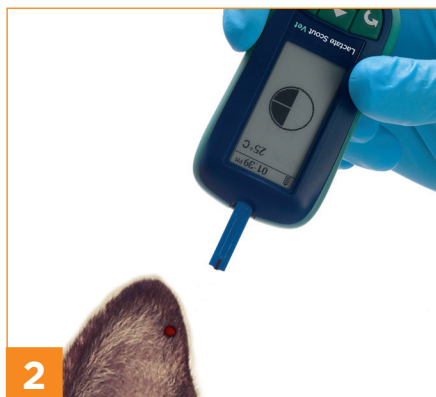


|                        |  |
|------------------------|--|
| Easy to use            | <ul style="list-style-type: none"> <li>• Insert/remove test strip to turn on/off</li> <li>• Select animal species: Feline, Canine, Porcine, Ovine, Bovine, Equine</li> <li>• Only 0.2 µl of capillary or whole blood required</li> <li>• Pre-calibrated test strips</li> <li>• Device calibrated by simple coding</li> <li>• Lactate concentration, date/time, measuring mode, temperature and memory ID on a single display</li> <li>• Automatic self test</li> </ul> |
| Fast and accurate      | <ul style="list-style-type: none"> <li>• Enzymatic amperometric detection method</li> <li>• Results within 10 seconds</li> <li>• Measuring range: 0.5 - 25 mmol/L</li> <li>• Lactate Scout Check Solutions available for function control</li> </ul>   |
| Example applications   | <ul style="list-style-type: none"> <li>• Prognosis and diagnosis of a variety of animal health conditions (such as shock, severe sepsis, low cardiac output, liver failure, poisoning, and drug therapy)</li> <li>• Assess the effects of preslaughter handling and transport stress</li> <li>• Performance diagnostics for high performance and race horses</li> </ul>  |
| Practical and reliable | <ul style="list-style-type: none"> <li>• Stores up to 500 results</li> <li>• 1,000 tests using just 2 x CR2450 batteries</li> <li>• Pocket-size: 91 mm (h) x 46 mm (w) x 21 mm (d)</li> <li>• Lightweight: 60 g</li> <li>• Operating range: 10 - 45°C and max. 85% humidity</li> </ul>   |

| Catalog No. | Name   |
|-------------|--|
| 7023-0512   | Lactate Scout Vet  |
| 7023-3422   | Lactate Scout Test Strips (new 25 pack)  |
| 7023-6300   | Lactate Scout Check Solution Low (1.8 - 2.2 mmol/L) - 1 x 2.5mL bottle   |
| 7023-6301   | Lactate Scout Check Solution Mid (4.5 - 5.6 mmol/L) - 1 x 2.5mL bottle   |
| 7023-6302   | Lactate Scout Check Solution High (8.9 - 11.1 mmol/L) - 1 x 2.5 mL bottle  |
| 7023-6303   | Lactate Scout Check Solution multi pack 1 x 2.5mL Low (1.8 - 2.2 mmol/L), 1 x 2.5mL Mid (4.5 - 5.6 mmol/L), 1 x 2.5mL High (8.9 - 11.1 mmol/L) |



1 Remove test strip and place into analyser.



2 Position the tip of the Lactate Scout Test Strip on the sample site and collect blood by touching with test strip.



3 Result appears in 10 seconds.

Distributed by

#### Manufacturer

EKF-diagnostic GmbH  
Ebendorfer Chaussee 3  
39179 Barleben  
Germany

+49 (0) 39203 511 0

sales@ekfdiagnostics.com

www.ekfdiagnostics.com